






- Humidity or moisture in the property, peeling paint, mildew or condensation.
- Discarded vegetable waste such as stalks or roots from cropping plants.
- Obvious signs, such as basements or cavities holding plants, lights or reflective material to aid plant growth.

How to deter drug crime from rental properties

- Trim shrubs and hedges to make the property more visible to the public.
- Install spy holes in front doors to protect residents.
- Install security lighting with motion sensors to aid visibility in dark areas around the property.
- Signpost building names and numbers clearly so police can easily find the right address.
- Control access to and from the property and clearly sign private parking areas.
- Swap numbers with neighbours, listen to any complaints and find out what's going on in or around the property.

Contact us

Report a crime:

-  Call **101** to report a non-urgent crime or to contact your local officer
-  Call **999** if a crime is in progress or life is in danger
-  If you are deaf or speech-impaired, text '**police**' and your message to **60066**
-  Visit your nearest police front counter to report non-urgent crime

News, information and advice:

-  Speak to an officer – at a police surgery, at a front counter or by calling **101**
-  Visit our website – **www.kent.police.uk**
-  Follow **@kent_police** or your district account on Twitter
-  Find us on **Facebook**
-  Chat to officers online – **www.kent.police.uk/onlinemeeting**
-  Sign up for your fortnightly district e newsletters – **www.kent.police.uk/enews**

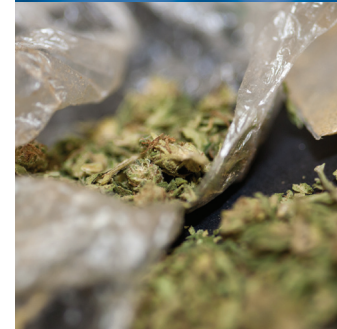
For details of all the ways to contact us, visit **www.kent.police.uk/contactus**

For other information guides in this series, visit **www.kent.police.uk/yourguide**



Kent Police

Drug dealing and use



Your guide to reporting drug crime



Kent Police



Kent Police works closely with residents as well as local and international partners to identify offenders, disrupt drug networks and tackle drug crime in Kent.

Signs of drug dealing or use in your community

Drug dealers usually operate from busy locations to supply drugs to buyers.

Look out for:

- Increased traffic from cars and pedestrians that only stop for short periods.
- Activity or noise that is heavier at weekends, late at night or around paydays.
- People loitering around a property during periods of heavy traffic.
- People waiting in cars before or after visiting a property.
- People parking around the corner or a few streets away and approaching on foot.
- Money or parcels being exchanged through windows, letterboxes or under doors.
- Small packets being exchanged for money.
- Debris including tin foil, small plastic bags, 'wraps', blister packs or syringes.

Remember, if you suspect the manufacture, sale or use of drugs in your community, make a note of any people or vehicles involved to help the police identify offenders.

How to spot cannabis or amphetamine factories

- Lights being left on, day and night.
- Curtains constantly drawn or blacked-out windows.
- Unpleasant, pungent or chemical smells.
- High humidity in a property.
- Chemical containers or drums at the property with labels removed or covered over.
- Venting protruding from the roof.
- Constant noise from cooling fans.
- Large bags of debris or soil being carried into, or out of, a property.
- Properties that look unoccupied but are visited for short periods of time.
- Lots of people coming and going at different or unusual times.
- Expensive vehicles visiting a person or property, which may not be in keeping with the surrounding area.



Advice for landlords

Rented properties or settings that offer privacy out of public view are most often targeted for drug production or distribution. Security-check new applicants carefully and watch out for:

- People who ask to pay months in advance, especially in cash.
- Tenants who prefer to pay rent in cash but have no visible income.
- Tenants who are vague, overly paranoid or ask you not to visit the property.
- Increased security measures at a property, such as extra locks or dead bolts, window bars, expensive alarms, or metal or wood blocking front or rear doors.
- Electrical wiring that shows signs of tampering or linking directly with power lines.
- High-powered lights that stay on all night, particularly in basements, attics and roof spaces.
- A rise or fall in electricity bills that may indicate the use of high-powered lighting.

